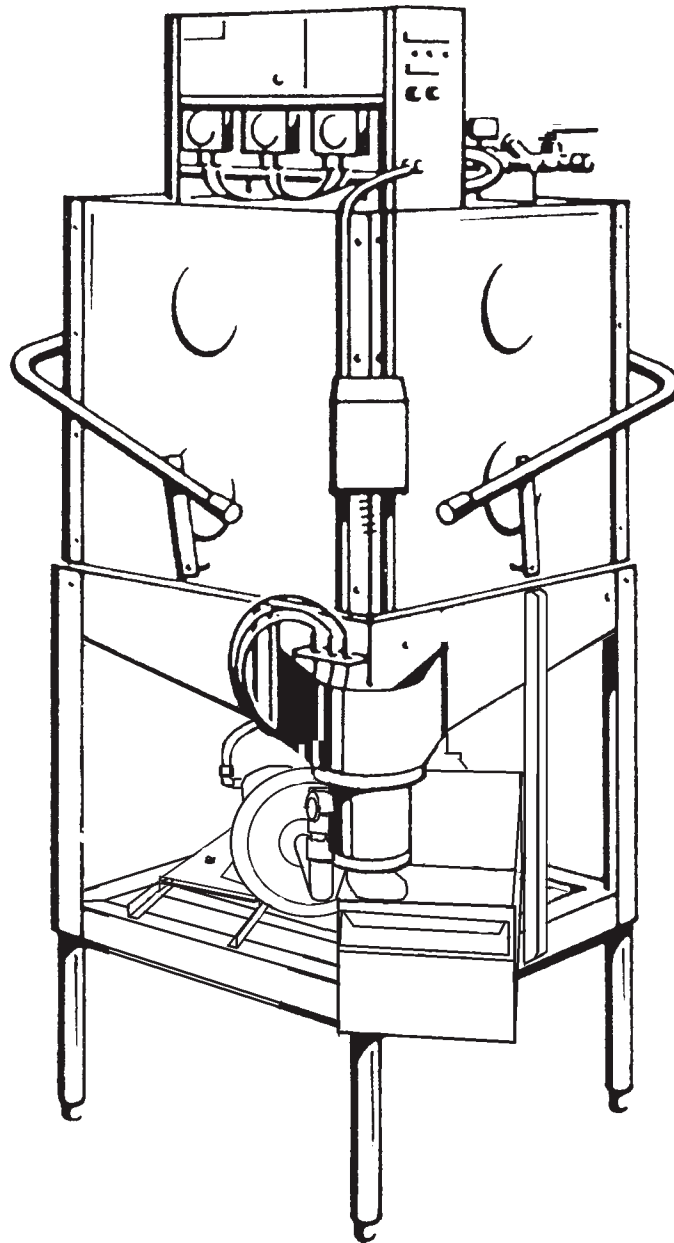


EFFECTIVE: September, 2015

American Dish Service

ADS CONVERTIBLE DISHWASHER

MODELS: AF3DS / AFC3DS



PARTS MANUAL

900 Blake Street
Edwardsville, Kansas 66111
(913)422-3700

The **American Dish Service** part numbers contained in this publication are replacement parts for equipment listed with governmental and regulatory agencies and are specified to maintain the regulatory mark and certification. These parts must only be replaced by those who are trained in the operation and service of commercial dishmachines. Aftermarket parts or modified parts are not compliant or listed with the standards of governmental and regulatory agencies; aftermarket parts are not authorized by ADS for replacement repairs. ADS will not be responsible for any liability if parts are used in the repair of the machine that are not ADS-specified, by those installing non-certified replacement parts or attempts to change the machine's cycle or operation other than as designed and certified. **Read the warnings and cautions provided below before working on or replacing parts on any ADS equipment.**



DANGER

The installation of electrical parts contained in this publication require the following precautions:

The electrical power supplied to this machine is an imminent hazard to life that could result in severe bodily injury or death if not properly installed or connected correctly. When working in the control box or on electrical parts, always disconnect power and perform the appropriate lock-out/tag-out procedure before servicing. Replace the cover to the control box and other protective covers when finished with servicing this equipment before returning the machine to normal operation.

LOOSE ELECTRICAL CONNECTIONS: Damage to the equipment can occur if the following precautions are not observed. Before connecting power to the machine, check all electrical terminals in the control box. Screws can loosen in transit. Loose connections on high amp load terminals such as the pump motor and tank heaters will cause wire burning and component damage during operation and will not be covered under ADS warranty.

"CLEAN CIRCUIT" means the electrical circuit breaker for the dishmachine supplies no other outlets, machines, or lights. GFCI outlets are not recommended for commercial dishmachines; ADS recommends that a single-rack machine be installed with the wire connection (hard-wired) directly from the circuit breaker. All high temp and conveyor equipment must be hard wired. If a plug and socket are used to provide electrical power to a dishmachine in a commercial kitchen, then according to electrical code it must be a GFCI, but not all GFCIs are the same. They must be rated for the Amp draw for the designed circuit.

For Reference: The NEC Article 210.8 regarding GFCI Protection (B) Other Than Dwelling Units (2) Commercial and Institutional Kitchens. All 15 and 20A, 125V receptacles installed in kitchens, even those that do not supply the countertop surface, must be GFCI protected.



WARNING

The chemical feeders and controls contained in this publication require the following precautions:

READ Manufacturer's Manual before Using this Product. For your safety read and observe all warnings in these instructions. While performing installation of parts described in this booklet, wear approved Personal Protective Equipment, including chemically resistant gloves and Safety Eye-Wear.

CHEMICALS: There are potentially hazardous situations when working with industrial cleaning chemicals for dishmachines. See chemical manufacturer's safe practices and SDS or MSDS sheets for handling and installing chemicals and supply containers.

Chemicals can damage or corrode plumbing and stainless parts of the dishmachine. Do not run chemical lines over controls or plumbing. Always secure chemical lines and check regularly for leaks. **If not properly handled, chemicals can cause serious bodily injury.** In the event of chemical contact to skin or eyes; wash immediately with fresh water and seek medical attention.

DE-LIMING THE MACHINE: Because of potential hazards resulting from the combination of chlorine with acid solution, only authorized trained individuals must be allowed to de-lime a commercial dishmachine.

CONTAINERS: The ADS chemical delivery system is designed for 5 gallon pails of industrial low-energy chemical products. Always use chemical resistant safety gloves and safety goggles (indirect-vented or non-vented) when changing chemical

CONTAINERS: The ADS chemical delivery system is designed for 5 gallon pails of industrial low-energy chemical products. Always use chemical resistant safety gloves and safety goggles (indirect-vented or non-vented) when changing chemical buckets. Immediately report spills and refer to your chemical suppliers SDS safety data sheet or MSDS material safety data sheet for information if chemical comes in contact with skin or eyes.

Any modifications to the chemical delivery system for smaller containers must include Closed Loop Chemical Containers (spill proof bottles) in a secured racking system. It is the responsibility of the user of the machine to purchase chemicals in spill proof containers. **FAILURE CAN RESULT IN SERIOUS INJURY.** Never place chemicals in open containers or containers that can be easily tipped over when moving or changing product. Failure to do so will void your ADS warranty.

Chemical supplies must be kept in closed delivery containers to avoid spills or contamination. Do not place chemical solutions in open containers or containers that can be easily tipped over in moving or changing.

Do not open the doors while the machine is in operation. Doing so could result in serious bodily injury from spraying hot water and chemicals.



CAUTION

The door lever arm parts in this publication are installed under spring tension and caution is needed whenever parts are changed. Wear safety glasses when working on the doors and lever. Care should be taken when moving, installing, or replacing any door lever arm parts. Use the ADS lever arm tool to unload the door spring during replacement or adjustment. The spring tension suddenly released can result in pinch or blunt trauma, and puncture wounds. If a wound occurs from the release of spring tension, wash the wound area immediately because of the soils that can accumulate on the metal parts and seek medical attention.

NOTICE

BEFORE YOU BEGIN: American Dish Service provides this information as a service to our customers. **Keep all instructions for future reference.** ADS reserves the right to alter or update this information at any time. Should you desire to make sure that you have the most up-to-date information, we would direct you to the appropriate document on our web site: www.americandish.com. **It is your obligation as the customer to ensure that the replacement parts for the machine are installed safely and properly, and when completed, the machine is left in proper and safe working order.** Electrical, Plumbing, and Chemical hookup must be performed by a qualified professional who will ensure that the equipment is installed in accordance with all applicable Codes, Ordinances, and Safety requirements. Failure to follow the installation instructions will void the warranty. **ADS assumes no liability or control over the installation of the equipment or replacement parts. Product failure due to improper installation is not covered under the ADS Warranty.**

Plumbing parts:

When working on the water inlet manifold, first relieve the water line pressure by turning off the water supply to the machine then energize the machine's fill valve. By doing this the manifold will empty of water. Turn off the electrical power and lock out/tag out the machine. It will then be safe to open the plumbing inlet manifold.

TANKLESS WATER HEATERS have shown to be problematic for commercial dishmachines. It has been the experience of ADS that tankless supply systems require multiple units plumbed in sequence with a recirculation loop to achieve proper pressure and temperature.

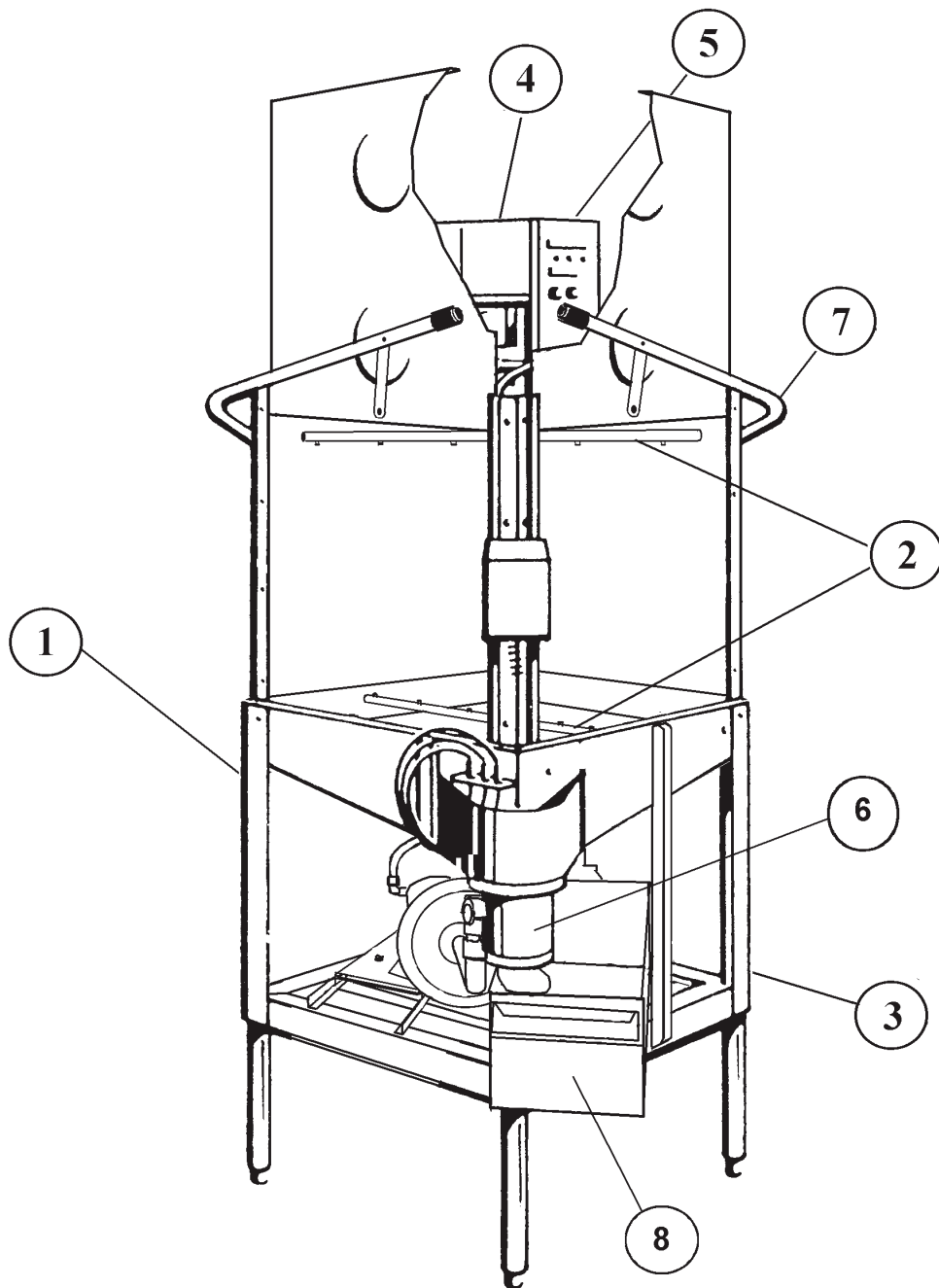
Check with the tankless water heater manufacturer, they may recommend a storage tank to guarantee proper flow and line pressure to the machine. **Failure to provide adequate water quantity, pressure and temperature to the machine will cause the machine to function improperly and is not the responsibility of ADS. Improperly installing ADS equipment or parts in this manner could void the warranty.** All costs associated with providing an adequate water supply to the machine is the sole responsibility of the user.

Drain replacement parts should not be reduced in size, all drain lines should remain the same size as it exits the dishmachine or larger. If you have questions, call 800-922-2178 or visit our website at www.AmericanDish.com

026-0090 / 027-0090

Models:
AF3D-S / AFC3D-S

American Dish Service



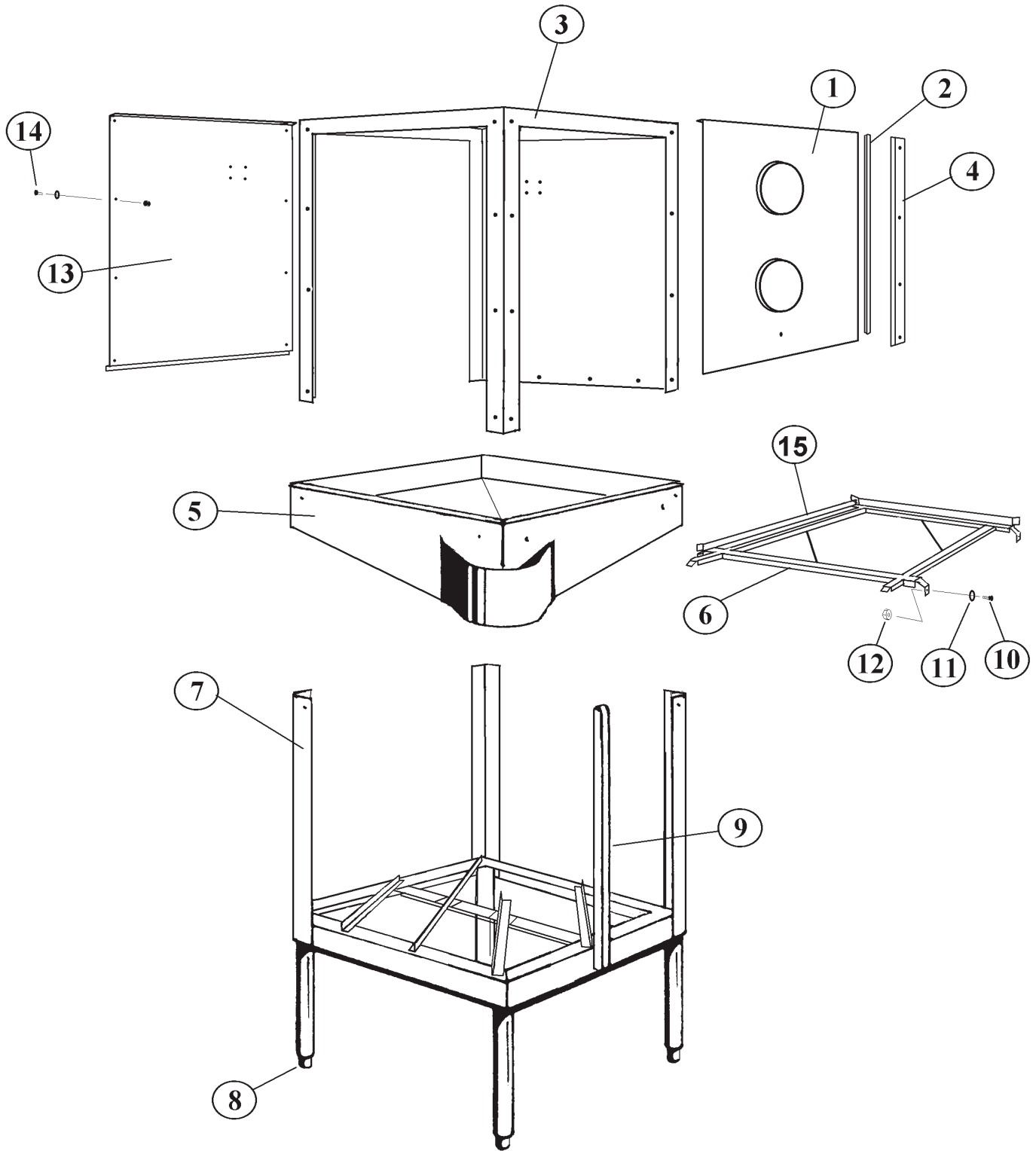
026-0090 / 027-0090

Models:

AF3D-S / AFC3D-S

American Dish Service

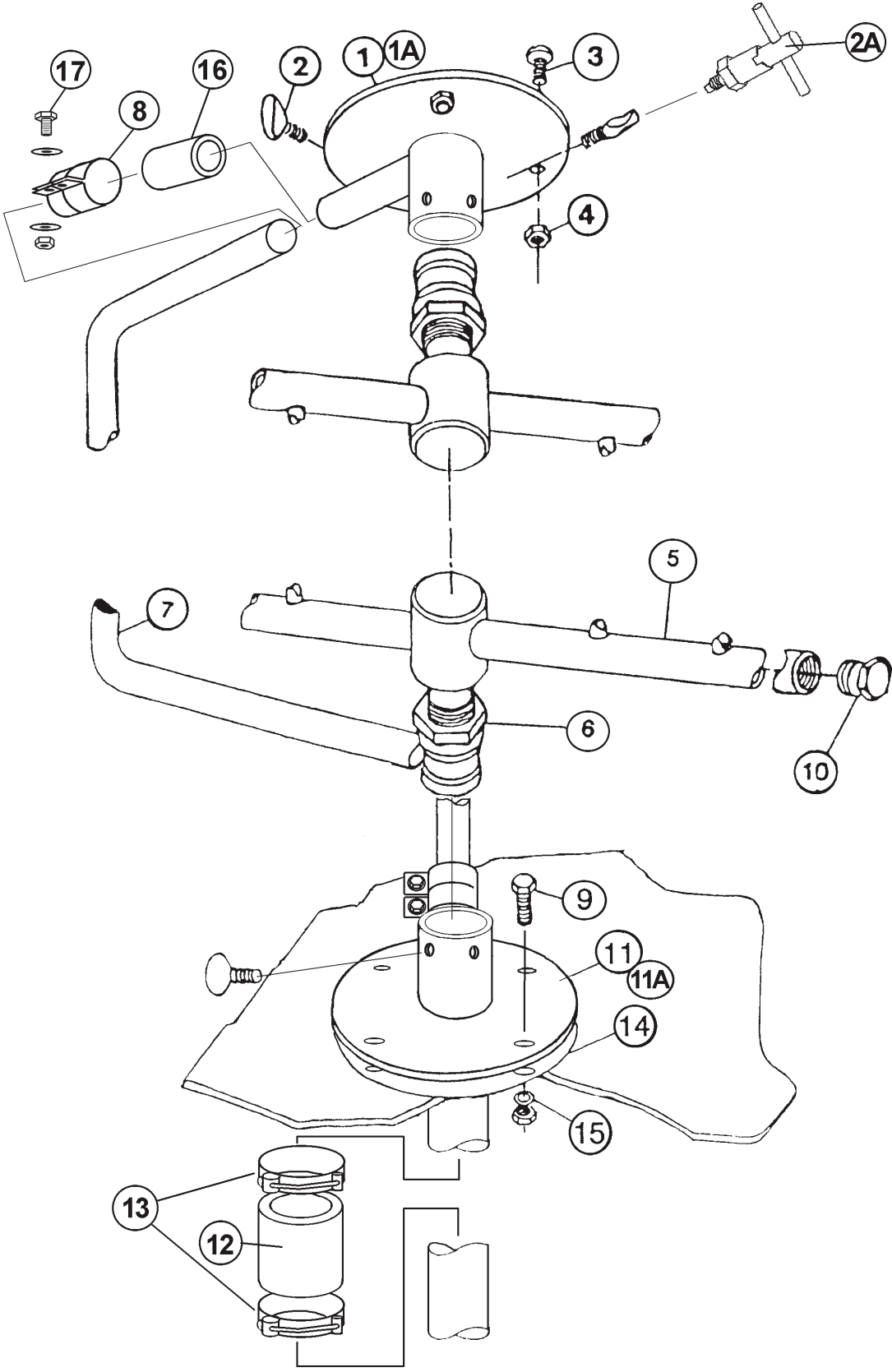
Ref. No.	Part No.	No. Req.	Description
1	061-1800	1	Cabinet Assembly AF3D-S / AFC3D-S
2	062-1700	1	Spray System Assembly AF3D-S / AFC3D-S
3	063-2000	1	Recirculating Pump Assembly AF3D-S / AFC3D-S
4	064-2600	1	Control System Assembly AF3D-S / AFC3D-S
5	065-2000	1	Fresh Water Plumbing Assembly AF3D-S / AFC3D-S
6	066-1300	1	Drain System Assembly AF3D-S / AFC3D-S
7	067-1000	1	Lever Arm Assembly AF3D-S
7	067-1100	1	Lever Arm Assembly AFC3D-S
8	051-8001	1	Scrap Trap Weldment



061-1800
 Cabinet Assembly
 AF3D-S / AFC3D-S

American Dish Service

Ref. No.	Part No.	No. Req.	Description
1	087-6116	2	Door
2	083-6107	4	Door Strip, Nylatron
3	085-6197	1	Hood Weldment
4	087-6114	4	Door Guide
5	085-6196	1	Pan Weldment
6	085-6146	1	Tray Track Weldment
7	085-6195	1	Frame Weldment
8	099-1003	4	Bullet Feet
9	087-6326	1	Sump Support
10	098-1423	16	Bolt, 1/4-20 x 1/2" HH SS
11	098-2404	42	Washer, SS, 1/4"
12	098-2507	48	Locknut 1/4-20, SS
13	087-6115	1	Door, Dummy
14	098-1414	28	Bolt, 1/4-20 x 1/2" Truss Head SS
15	086-6638	1	Tray Track Conversion Bar
N/S	098-1420	2	Bolt, 1/4-20 x 1 1/4" HH SS
N/S	091-4146	2	Clamp, Conduit
N/S	086-6104	2	Clamp, Double
N/S	384-6118	2	Bushing, 1/2" (Dowel)
N/S	089-9096	1	Scrap Accumulator
N/S	089-9090	1	Scrap Accumulator Cover
N/S	089-9078	1	Scrap Accumulator Tray
N/S	292-1028	1	No-Hub Connector, 2" Pipe to Pipe

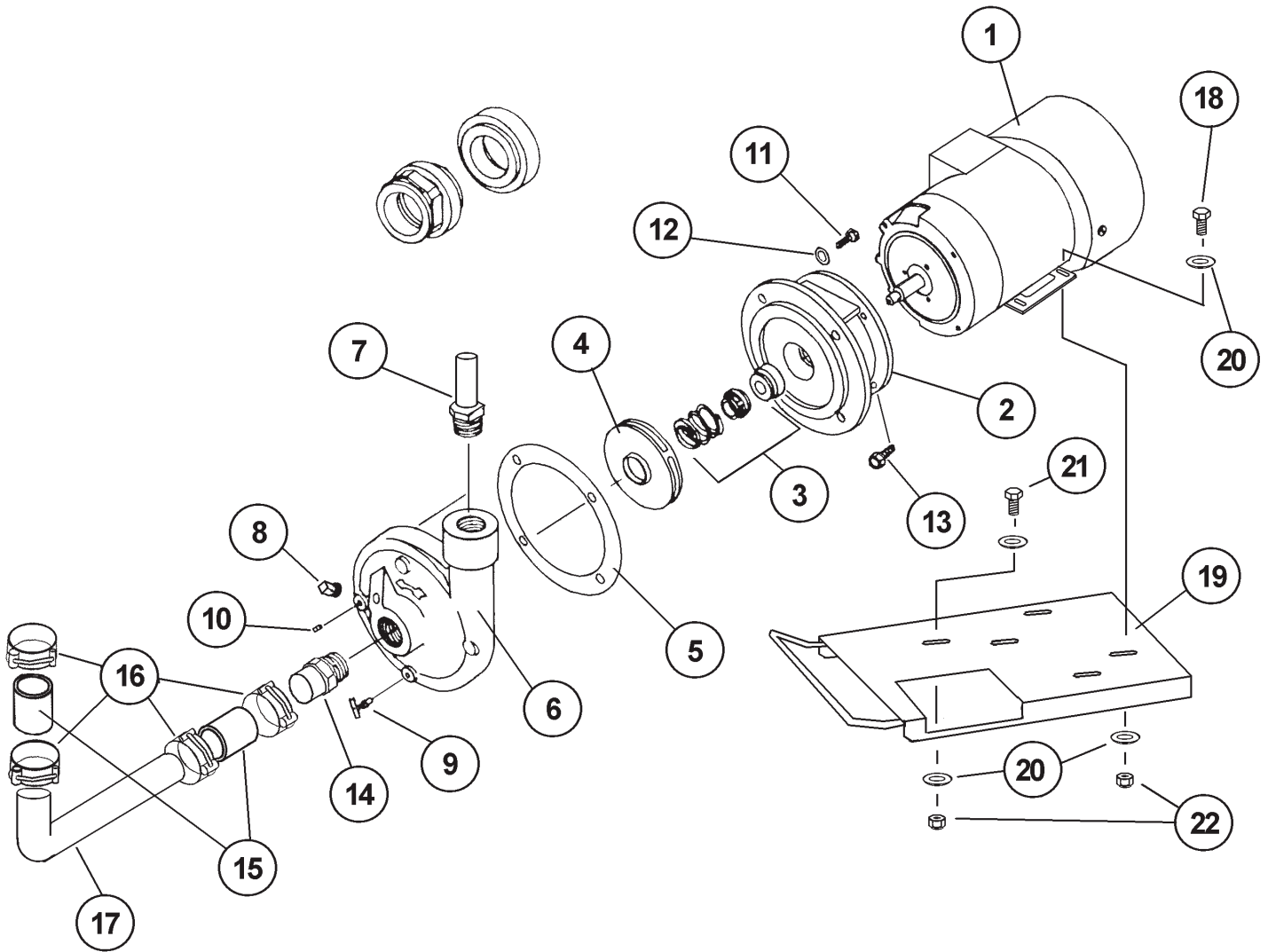


062-1700

Spray System Assembly
AF3D-S / AFC3D-S

American Dish Service

Ref. No.	Part No.	No. Req.	Description
1	085-6628	1	Upper Spray Base, SS, Thumbscrew Type
1A	085-6626	Opt.	Upper Spray Base, SS, Bayonet Type
2	098-1583	6	Thumb Screws 5/16-18 x 5/8" SS
2A	099-1028	Opt.	Bayonet Fitting
3	098-1426	4	Bolt, 1/4-20 x 3/4" HH SS
4	098-2507	8	Locknut, 1/4-20 SS
5	081-6211	2	Spray Arm Assembly, AF/AFC3D-S
6	081-6210	2	Spray Arm Bearing Assembly, Cleanable
7	087-6226	1	Upper Arm Supply Tube (Manifold)
8	081-6501	2	Clamp Assembly, Inside Manifold (Incl. Bolts & Nuts)
9	098-1426	4	Bolt, 1/4-20 x 3/4" HH SS
10	084-6211	4	Spray Arm End Plug, SS
11	085-6627	1	Lower Spray Base, SS, Thumbscrew Type
11A	085-6625	Opt.	Lower Spray Base, SS, Bayonet Type
12	093-1040	1	Plastic Sleeve, Discharge Tube
13	098-9037	2	Clamp, Discharge Tube sleeve
14	089-6201	1	Gasket, Spray Base
15	098-2404	4	Washer, 1/4", SS
16	093-1041	2	Plastic Sleeve, Inside Manifold Tube
17	098-1426	4	Bolt, 1/4-20 x 3/4" HH SS

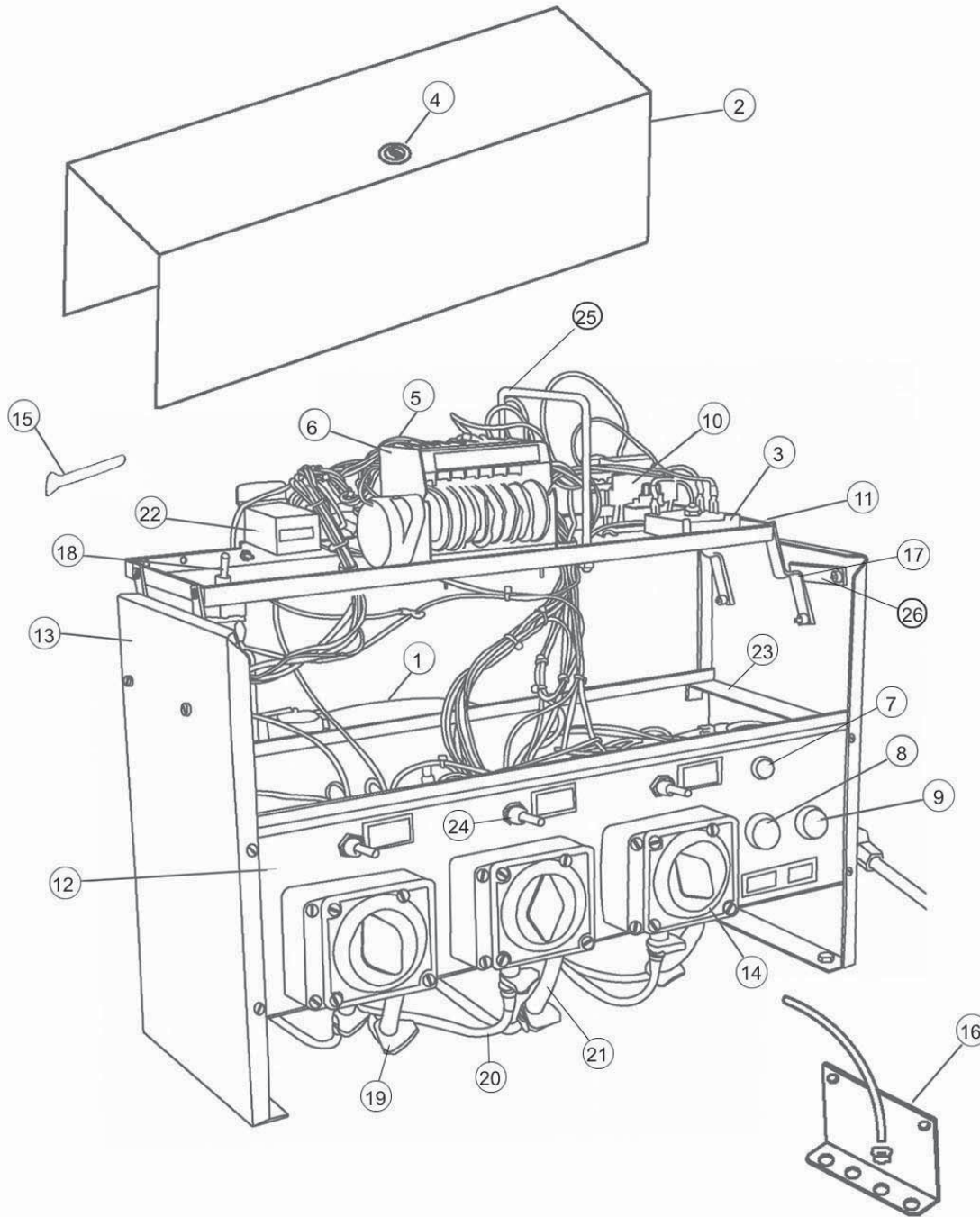


063-2000

Recirculating Pump Assembly
AF3D-S / AFC3D-S

American Dish Service

Ref. No.	Part No.	No. Req.	Description
1	091-1001	1	Motor
2	082-6301	1	Rear Housing
3	092-2001	1	Seal Assembly
4	082-6303	1	Impeller
5	089-6303	1	Gasket
6	082-6302	1	Front Housing (Pump Cover)
7	085-6198	1	Discharge Pipe Weldment
8	092-1144	1	Pipe Plug, 3/8", SS
9	092-1002	1	Petcock 1/8"
10	092-1145	1	Pipe Plug, 1/8", SS
11	098-1507	2	Bolt, HH, SS, 5/16-18 x 7/8
N/S	098-1510	2	Bolt, 5/16-18 x 1 1/4", HH, SS
12	098-2503	4	Washer, Copper 5/16
13	098-1607	4	Bolt, 3/8-16 x 7/8" HH SS
14	085-6321	1	Pump Pipe, Suction
15	093-1039	2	Plastic Sleeve, Suction Tube
16	098-9038	4	Clamp, Suction Tube Sleeve
17	085-6320	1	Suction tube
18	098-1426	2	Bolt, 1/4-20 x 3/4", HH, SS
19	085-6408	1	Motor Plate
20	098-2404	6	Washer, 1/4", SS
21	098-1434	1	Bolt, 1/4-20 x 2", HH, SS
22	098-2507	3	Locknut, 1/4-20, SS
Rep.	088-1012	0	Pump assembly Through Impeller (Needs Gasket 089-6303)

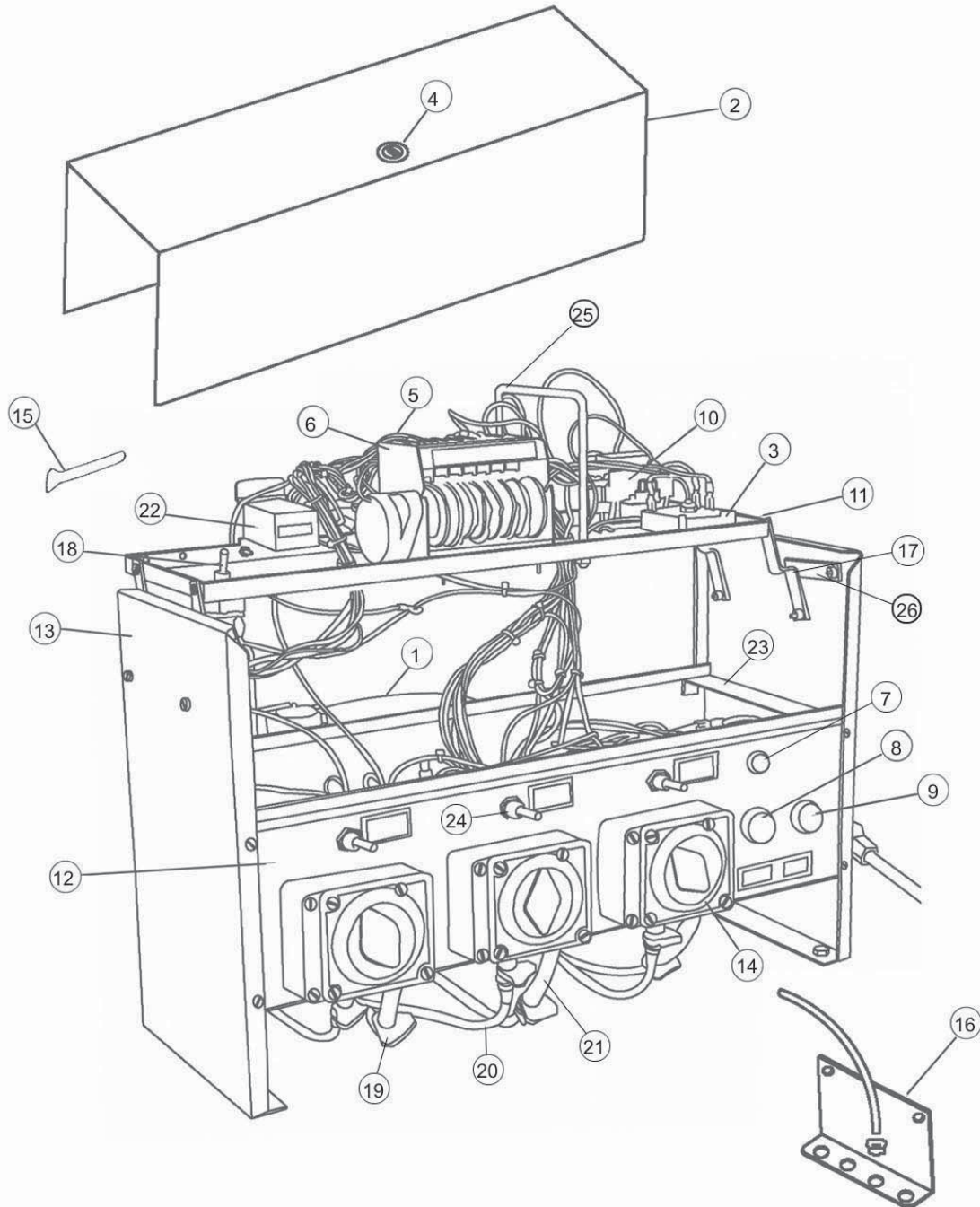


064-2600

Control System Assembly
AF3D-S / AFC3D-S

American Dish Service

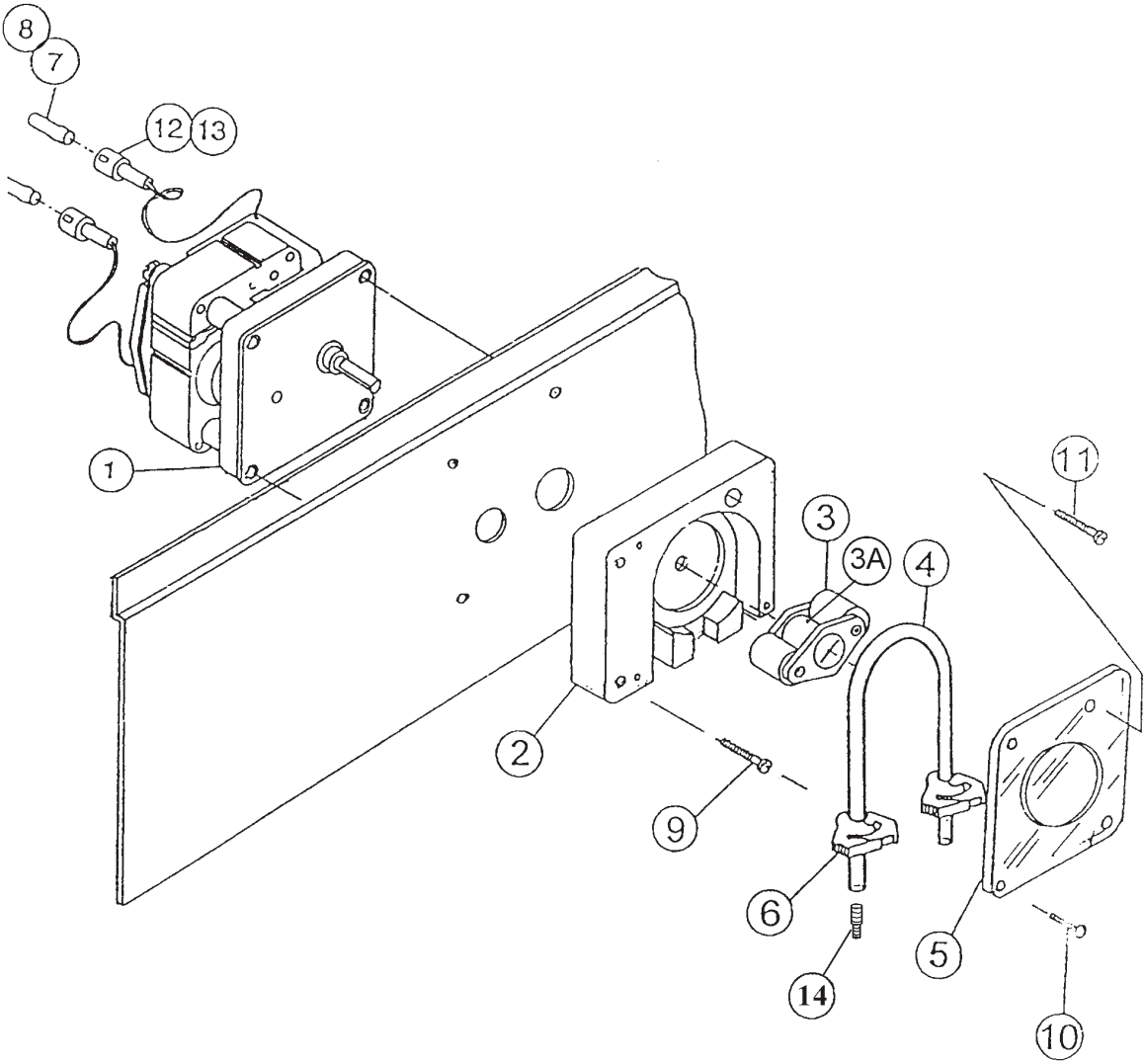
Ref. No.	Part No.	No. Req.	Description
1	091-5156	1	Conduit, 1/2" (Sold by the Foot)
2	087-6433	1	Control Box Cover
3	091-3003	1	Instant Start Relay (Not Included in Auto-Start Machines)
4	096-1002	1	Control Box Lock
5	091-5022	1	Wire Harness
6	091-3051	1	Timer, 90 Second, 7 Cam
Opt.	091-3078	Opt.	Timer, 150 Second, 8 Cam
7	091-7006	1	Red Indicator Light
8	091-3002	1	Push-Button Switch, Red Start
9	091-3001	1	Push-Button Switch, Black Fill
10	091-3083	1	Contactor
11	087-6435	1	Upper Shelf, Control Box
12	087-6425	1	Pump Panel, Control Box
13	081-6422	1	Control Box Assembly
14	064-0010	3	Chemical Pump Assembly (Peristaltic)
15	099-1004	1	Timer Adjustment Key
16	064-0026	1	Chemical Feeder Assembly
17	086-6678	4	Control Box Hinge
18	091-3060	1	Switch, Service
19	098-1606	3	Tube Clamp
20	093-1044		Tubing, Chemical Line, 1/4" Blue (By the Foot)
20	093-1045		Tubing, Chemical Line, 1/4" Green (By the Foot)
20	093-1046		Tubing, Chemical Line, 1/4" Red (By the Foot)
21	087-6700	3	Tube Stiffener
22	091-3049	1	Counter, Electric
23	086-6535	2	Shelf Support Bracket
24	091-3009	4	Switch, SPST Momentary
25	086-6317	1	Shelf Handle
26	086-6676	1	Safety Latch
N/S	089-9201	1	Decal, Wiring Diagram
N/S	089-9204	1	Decal, Clean Instruction, Outside Sump

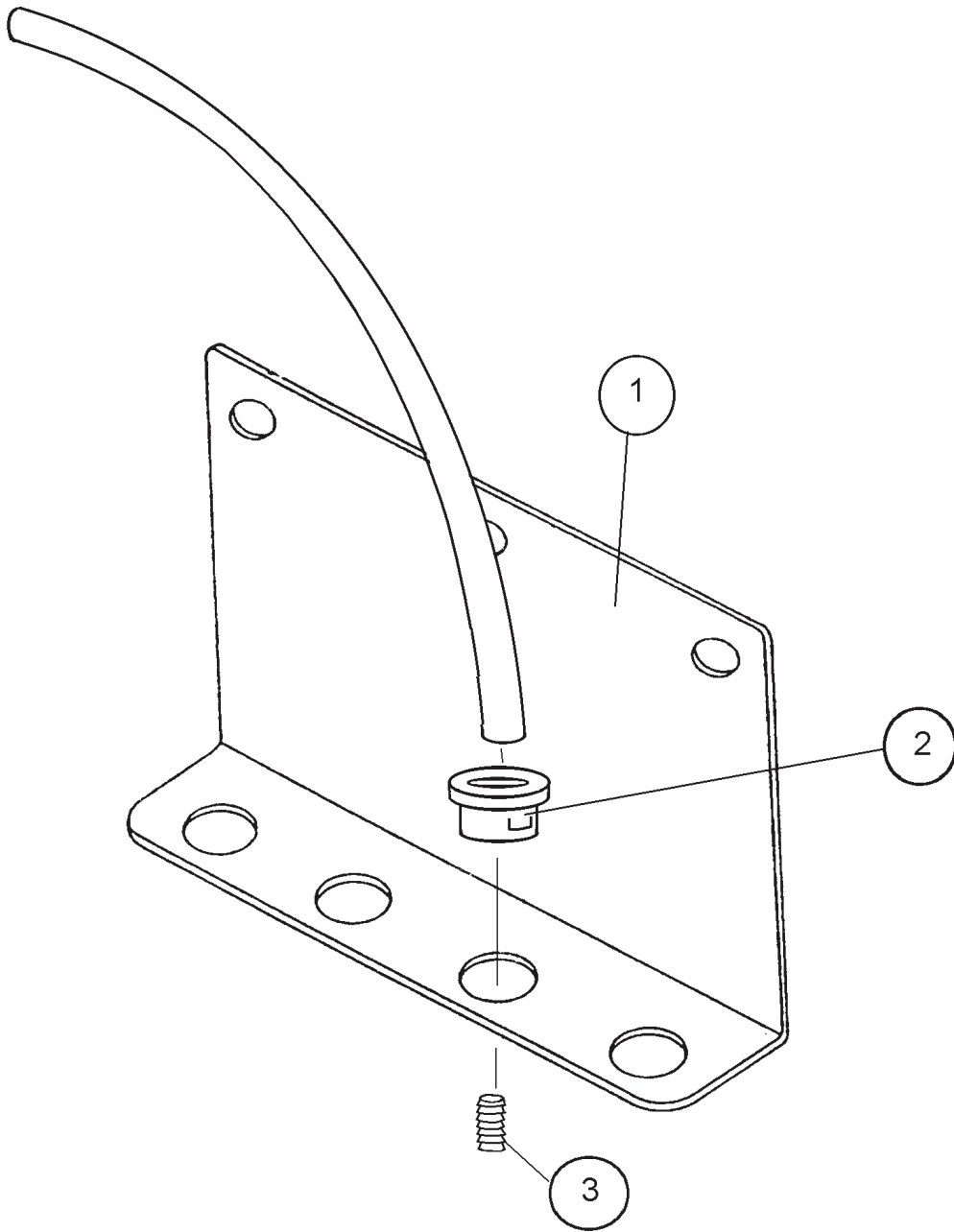


064-2600
Control System Assembly
AF3D-S / AFC3D-S

American Dish Service

Ref. No.	Part No.	No. Req.	Description
N/S	089-9227	1	Decal, Cam Adjustment DWM
N/S	086-6166	1	Bracket, Door Cut-Off Switch
N/S	089-9312	1	Decal, NSF Specifications
N/S	091-3059	Opt.	Relay, Auto Start
N/S	099-4502	1	Switch, Door Cut-Off
N/S	099-4500	Rep.	Switch Body, Door Cut-Off (Replacement)
N/S	099-4501	Rep.	Switch Plunger, Door Cut-Off (Replacement)
N/S	099-4503	Rep.	Switch Contactor, Door Cut-Off (Replacement)
N/S	098-1605	3	Hose Clamp
N/S	091-4003	1	Junction Box
N/S	091-4004	1	Junction Box Cover
N/S	091-4141	5	Fitting, Conduit, 1/2", Straight
N/S	091-4142	2	Fitting, Conduit, 1/2", 90 °
N/S	098-9022	1	Plastic Plug, 1/2"
N/S	098-9020	1	Plastic Plug, 7/8"
N/S	292-1006	2	Pipe Locknut, 1/2" FPT, Brass (Holds Bell Box to Control Box)
N/S	092-1008	1	Nipple, 1/2" Close, Brass



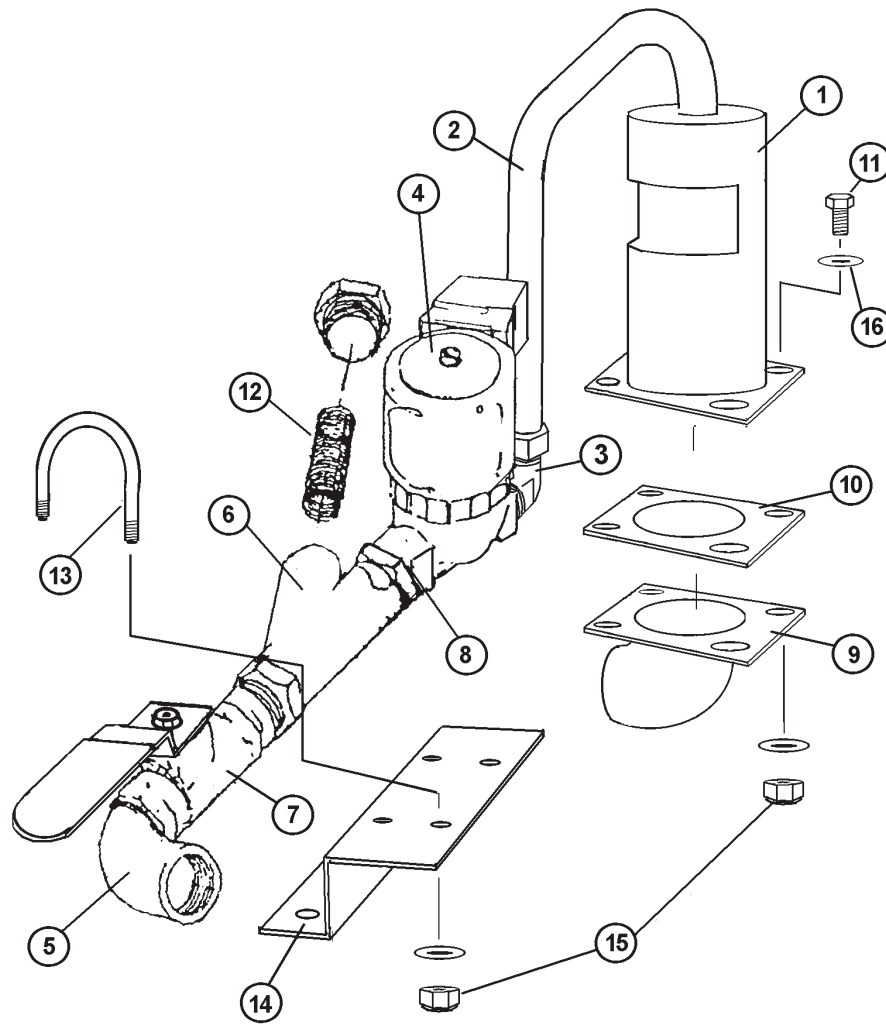


064-0026

Chemical Feeder Assembly
AF3D-S / AFC3D-S

American Dish Service

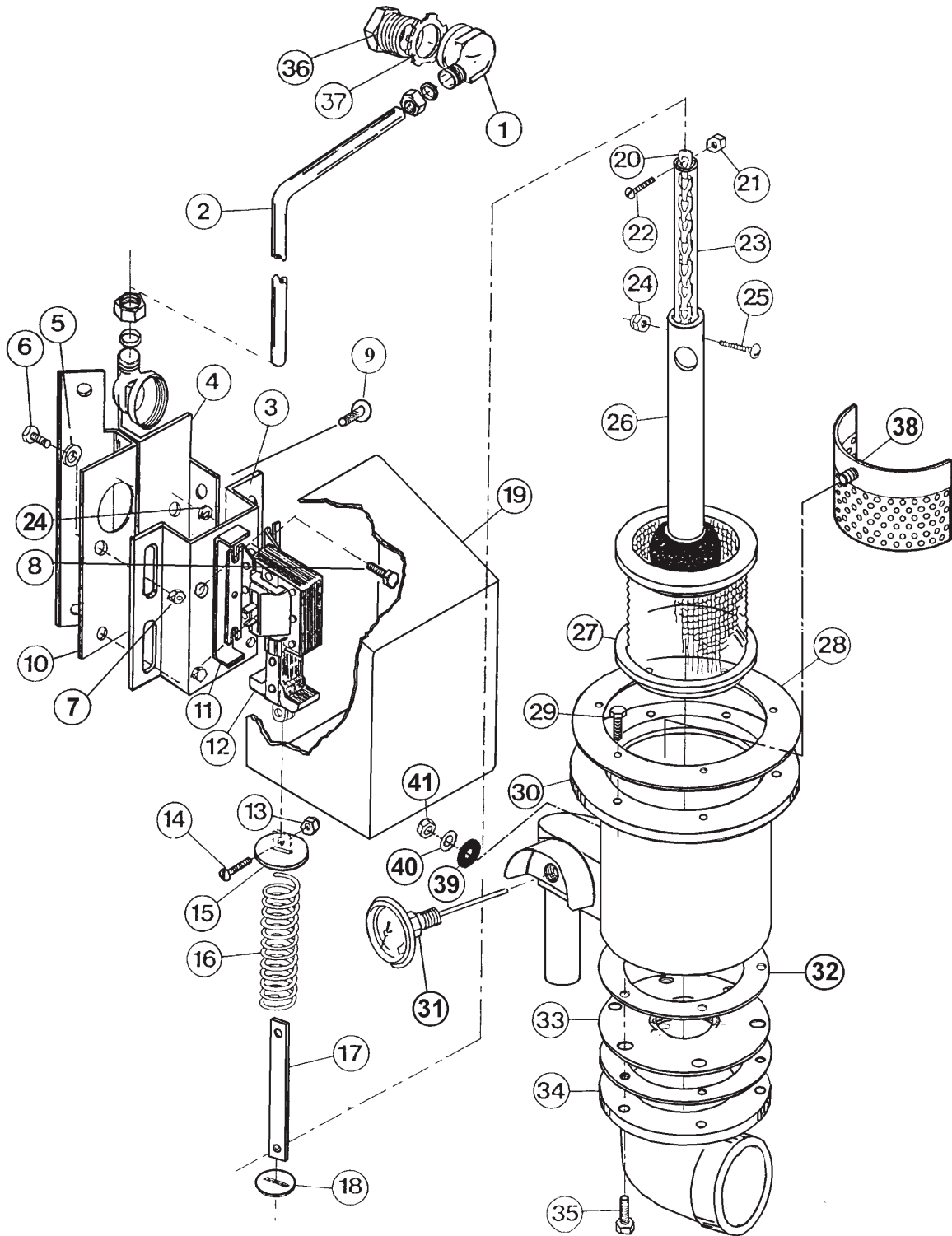
Ref. No.	Part No.	No. Req.	Description
1	086-6429	1	Chemical Feeder Bracket
2	091-4015	3	Heyco Grommet
3	093-1043	3	Barbed Fitting



065-2000
 Plumbing Assembly
 AF3D-S / AFC3D-S

American Dish Service

Ref. No.	Part No.	No. Req.	Description
1	385-6121	1	Air Gap Weldment
2	092-3118	1	Fresh Water Supply Tube
3	092-1062	1	Fitting, ½" MPT x ½" Comp. 90 ° Elbow
4	092-5015	1	Solenoid Valve
5	092-1006	2	Fitting, ½" Street Elbow
6	092-9001	1	Line Strainer
7	092-5054	1	Shut Off Valve
8	092-1008	2	Nipple, ½" Close
9	385-6124	1	Air Gap Flanged Outlet Elbow Weldment
10	389-6603	1	Gasket, Air Gap
11	098-1426	4	Bolt, ¼-20 x ¾", HH, SS
12	092-9002	Rep.	Screen (Replacement)
13	098-9027	1	U-Bolt, ¼-20, SS
14	086-6537	1	Bracket, Plumbing
15	098-2507	6	Locknut, ¼-20, SS
16	098-2404	8	Washer, ¼", SS
Rep	092-5016	0	Solenoid Valve Repair Kit (Replacement)
Rep	092-5025	0	Solenoid Valve Body (Replacement)
Rep	092-5017	0	Solenoid Valve Coil (Replacement)

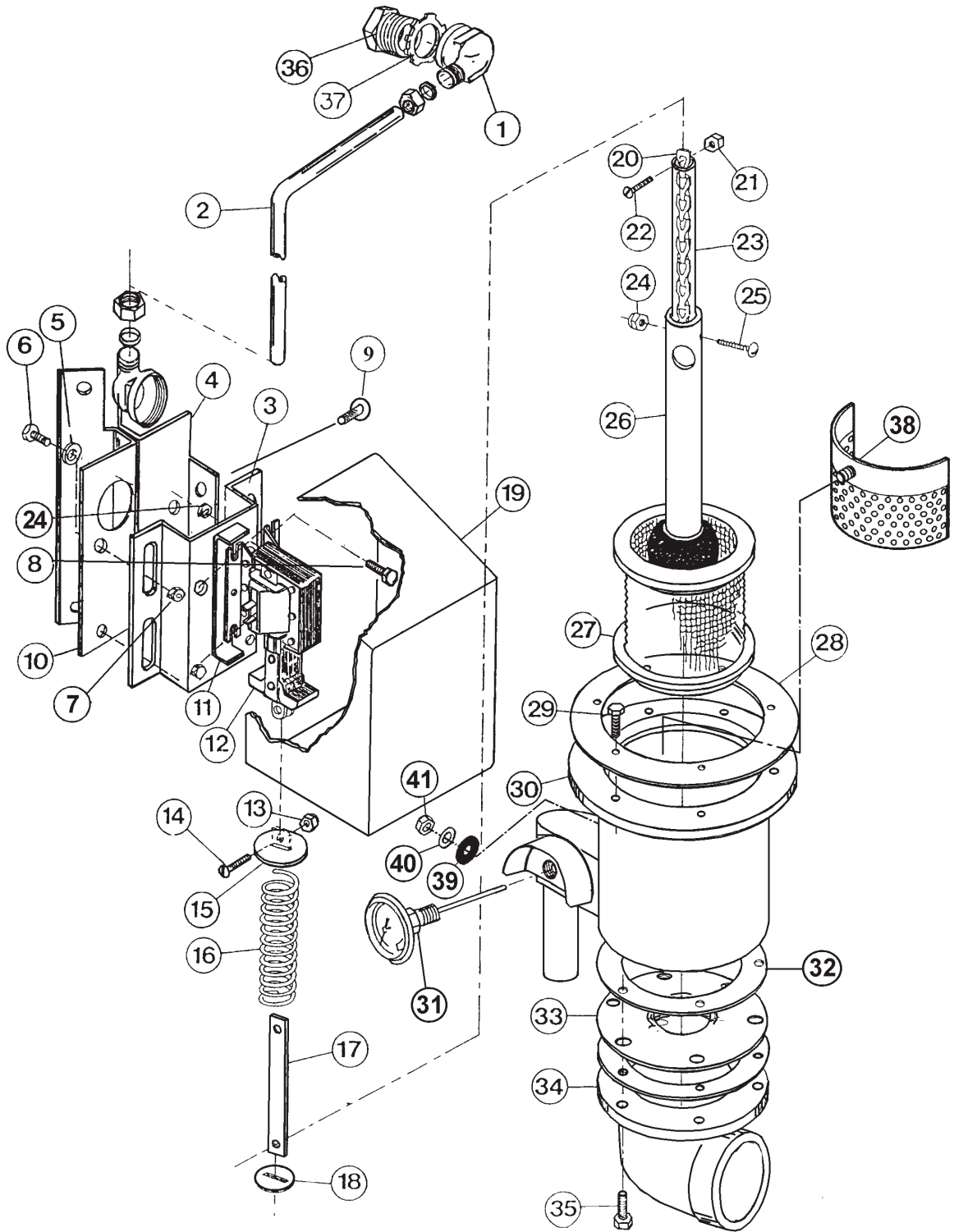


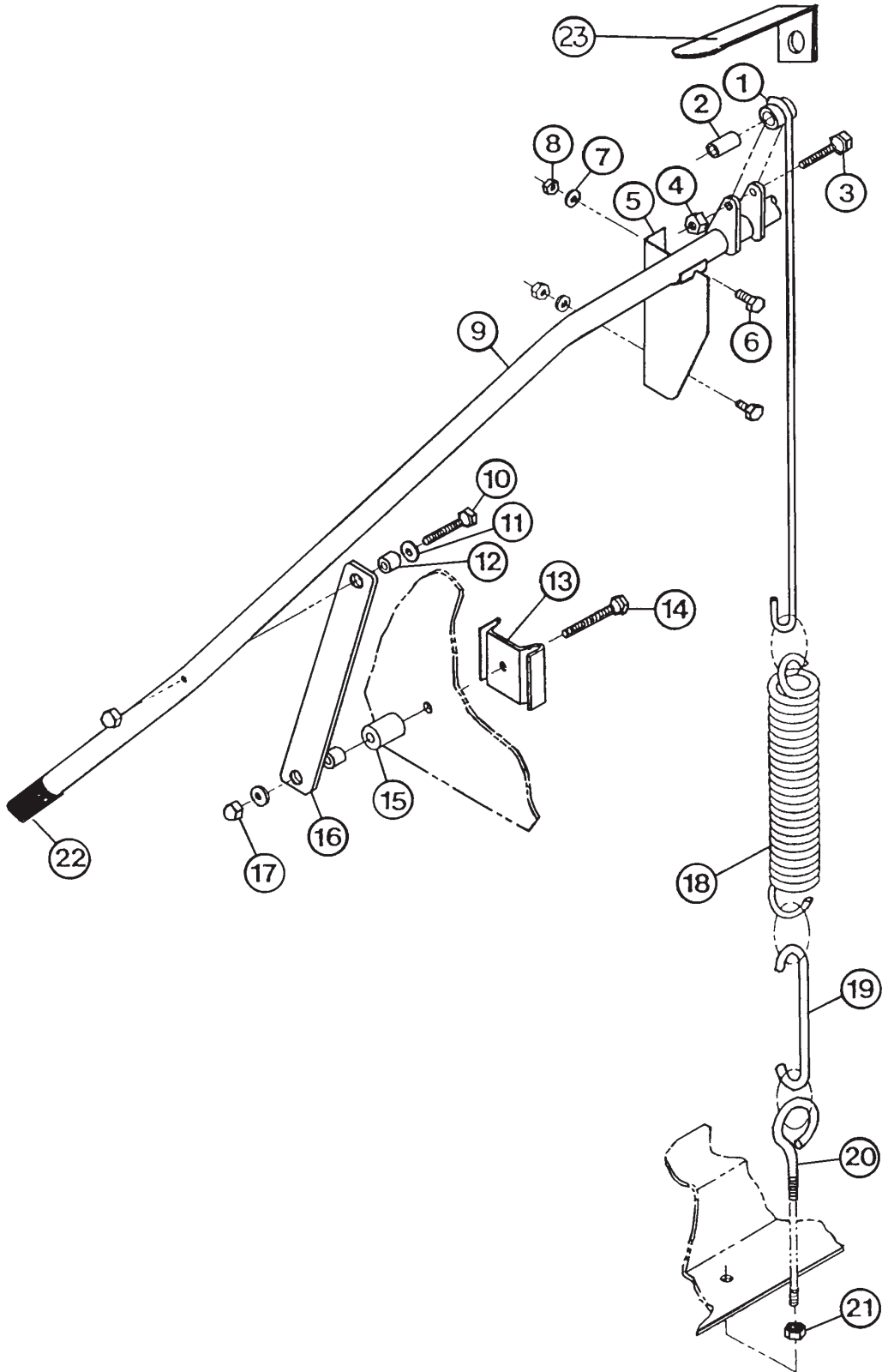
066-1300

Drain System Assembly
AF3D-S / AFC3D-S

American Dish Service

Ref. No.	Part No.	No. Req.	Description
1	092-1030	2	Conduit Fitting, 1/4", 90 °
2	086-6646	1	Conduit, 3/8" Dia. X 19"
3	086-6622	1	Solenoid Base, 3D Series
4	086-6645	1	Mounting Bracket, Right
5	098-2404	10	Washer, 1/4", SS
6	098-1423	4	Bolt, HH, SS, 1/4-20 x 1/2"
7	098-2507	4	Locknut, SS, 1/4-20
8	098-1306	4	Bolt, HH, SS, 10-32 x 1/2"
9	098-1413	2	Bolt, 1/4-20 x 3/8", TH, SS
10	086-6644	1	Mounting Bracket, Left
11	086-6604	1	Solenoid Stop
12	091-2001	1	Solenoid
13	098-2201	1	Locknut, 8-32, SS
14	098-1205	1	Screw, RH, SS, 8-32 x 5/8"
15	086-6607	1	1-1/16 Slotted Washer (Large)
16	098-3001	1	Spring
17	086-6605	1	Link
18	086-6606	1	1-5/16 Slotted Washer (Small)
19	085-6612	1	Solenoid Cover
20	089-6610	1	Chain, Make From 098-9001
21	098-2201	1	Locknut, 8-32, SS
22	098-1205	1	Screw, RH, SS, 8-32 x 5/8"
23	084-6622	1	Chain Cover, Make From 093-1012
24	098-2301	5	Locknut, SS, 10-32
25	098-1311	1	Screw, RH, SS, 10-32 x 1 3/8"
26	081-6601	1	Drain Plug Assembly
Rep	084-6608	0	Drain Tube (Replacement Part)
Rep	083-6601	0	Drain Ball (Replacement Part), 1 1/2"
27	085-6602	1	Sump Screen
28	089-6601	1	Sump Gasket
29	098-1423	6	Bolt, HH, SS, 1/4-20 x 1/2"
30	085-6204	1	Sump Assembly With Tail Piece
31	099-1001	1	Temperature Gauge
32	089-6602	2	Drain Elbow Gasket

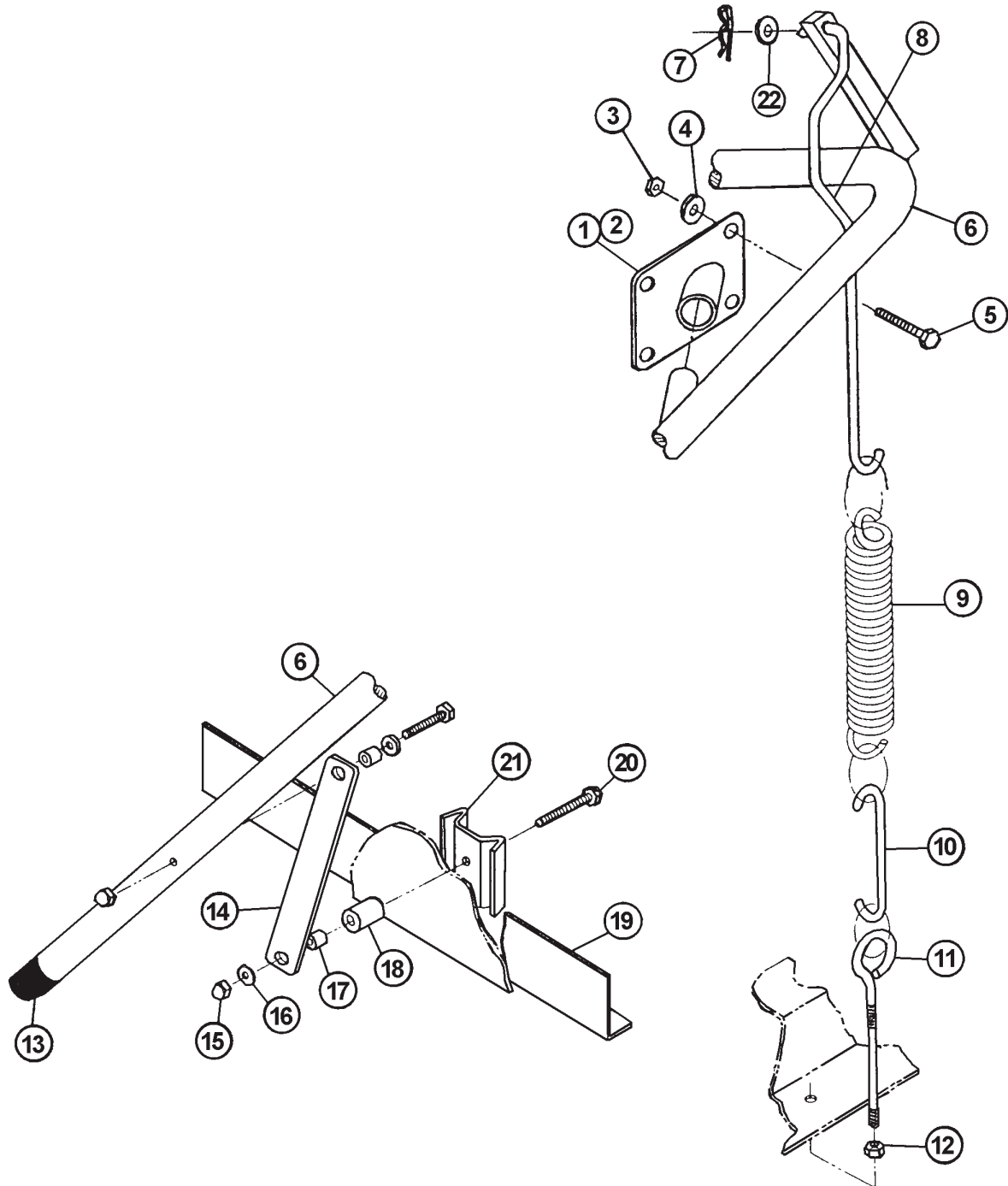




067-1000
Lever Arm Assembly
AF3D-S

American Dish Service

Ref. No.	Part No.	No. Req.	Description
1	085-6701	2	Spring Extension Weldment
2	098-4002	2	Bushing, Bronze
3	098-1514	2	Bolt, 5/16-18 x 1 1/2", HH SS
4	098-2505	2	Cap Nut, SS, 5/16-18
5	085-6703	1	Arm Support Bracket Weldment, Left
	085-6707	1	Arm Support Bracket Weldment, Right
6	098-1423	4	Bolt, 1/4-20 x 1/2, HH, SS
7	098-2404	4	Washer, 1/4, SS
8	098-2507	4	Locknut, 1/4-20, SS
9	085-6726	1	Door Operating Arm Weldment (Lever Arm)AF-3DS
10	098-1431	2	Bolt, 1/4-20 x 1 3/8, HH, SS
11	098-2404	6	Washer, 1/4, SS
12	084-6703	4	Bushing (Dowel 3/8)
13	086-6701	2	Door Stop
14	098-1432	2	Bolt, 1/4-20 x 1/34, HH, SS
15	084-6702	2	Spacer
16	086-6702	2	Door Link
17	098-2405	4	Cap Locknut, 1/4-20, SS
18	098-3003	2	Door Spring
19	086-6737	2	Spring Extension, Secondary
20	098-1581	2	Eye Bolt, 5/16-18 x 6"
21	098-2502	2	Nut, HH, SS, 5/16-18
22	099-1018	2	Lever Arm End Cap
23	086-6623	1	Lever Arm Cut-Off Bracket, "L"
N/S	098-2503	2	Washer, Copper, 5/16"
N/S	088-1061	Opt.	Kit, Lever Arm Conversion, Straight to Corner



067-1100
Lever Arm Assembly
AFC3D-S

American Dish Service

Ref. No.	Part No.	No. Req.	Description
1	085-6808	1	Right Pivot Weldment (Long), (Plumbing Side)
2	085-6807	1	Left Pivot Weldment (Short)
3	098-2507	8	Locknut, HH, SS, 1/4-20
4	098-2404	8	Flat Washer, 1/4", SS
5	098-1423	8	Bolt, HH, SS, 1/4-20 x 1/2"
6	085-6725	1	Door Lever Arm Weldment, AFC-3DS
7	098-8006	1	Hairpin Cotter, SS
8	085-6721	1	Spring Extension Weldment
9	098-3011	1	Door Spring
10	086-6737	1	Spring Extension, Second
11	098-1581	1	Eye Bolt, SS, 5/16-18 x 6"
12	098-2502	1	Nut, HH, SS, 5/16-18
13	092-1086	2	Heavy Duty Cap 1"
14	086-6702	2	Door Link
15	098-2405	4	Locknut Cap, SS, 1/4-20
16	098-2404	4	Washer, SS, 1/4"
17	084-6701	4	Bushing (Dowel 5/8")
18	084-6702	2	Spacer
19	087-6701	2	Door Brace
20	098-1434	4	Bolt, HH, SS, 1/4-20 x 2"
21	086-6701	2	Door Stop
22	098-2503	1	Washer, Copper, 5/16"
N/S	088-1062	Opt.	Kit, Lever Arm Conversion, Corner to Straight

American Dish Service

*Manufacturer of low and high temperature
Commercial Dishwashers and Glasswashers*

900 Blake Street
Edwardsville, Kansas 66111
Ph:(913) 422-3700
Fax:(913) 422-6630