



**American Dish Service**  
Manufacturers of Ware Washing Equipment

WWW.AMERICANDISH.COM

### 3D-S Series

**FAMILY MODELS**  
AF-3DS AH-3DS  
AFC-3DS AHC-3DS

<b>RATED CAPACITY (Racks/Hr.)</b>	37	23
<b>WASH TIME (Sec.)</b>	45	75
<b>RINSE TIME (Sec.)</b>	30	60
<b>DWELL (Sec.)</b>	15	15
<b>TOTAL CYCLE TIME (Sec.)</b>	90	150

**WATER TEMPERATURE (Supply)** 120° F Min.  
49° C Min.

**WATER CONSUMPTION** 2.2 Gal's Per Cycle  
8.3 Liters Per Cycle

**MOTOR** 1.5 HP  
1.125 KW

**ELECTRICAL RATINGS** 115 Volts  
Single Phase

Connect to Supply Source using 10-12 AWG copper wires. Circuit Protection: 20 AMP Circuit Breaker or Fuse with a 20 AMP Rating.

**RACK SIZE** 19 3/4" x 19 3/4"  
50.2 cm x 50.2 cm  
**DOOR CLEARANCE** 20 3/4" x 20 1/2"  
52.7 cm x 52.1 cm

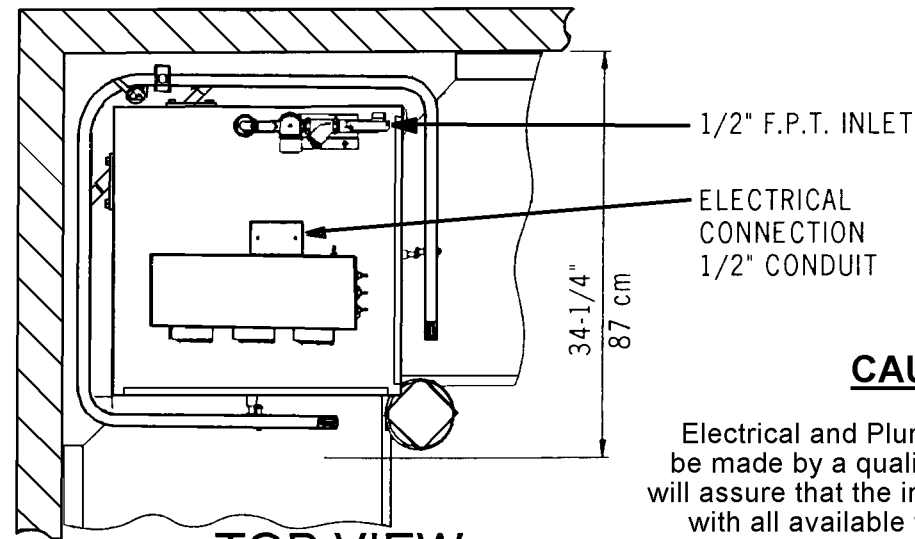
**WATER INLET** 1/2" F.P.T.  
**DRAIN (Scrap Trap)** 2" Pipe  
**HEIGHT (Door Open)** 80 7/8"  
205.4 cm

**HEIGHT (Door Closed)** 70 1/2"  
179.1 cm

**WIDTH (Overall)** 33 1/2"  
85.1 cm  
**WIDTH (Table to Table)** 25"  
63.5 cm

**DEPTH (Overall)** 34 1/4"  
86.9 cm

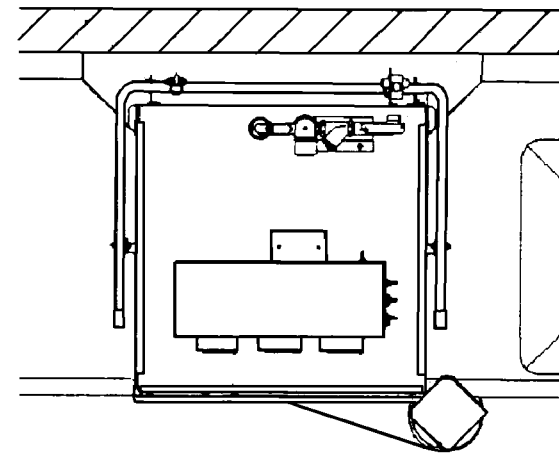
**SHIPPING WEIGHT** 295 lb.  
133.8 kg.  
**SHIPPING VOLUME** 56.25 cu. ft.  
1.59 cu meters



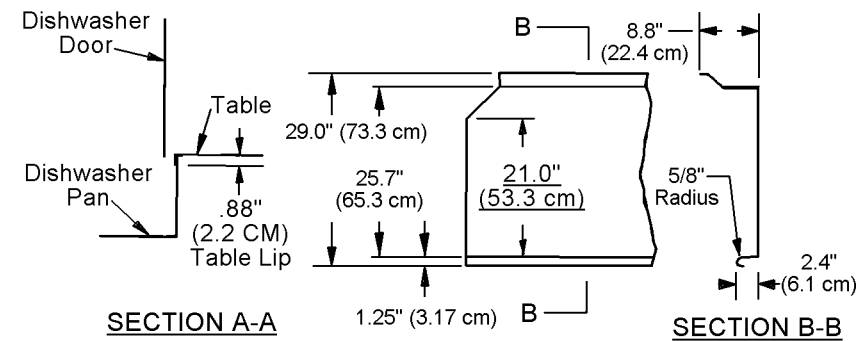
**TOP VIEW**  
CORNER APPLICATION

**CAUTION:**

Electrical and Plumbing connections must be made by a qualified Service Person who will assure that the installation is in compliance with all available federal, state, and local Health, Electrical, Plumbing, and Safety codes.



**TOP VIEW**  
IN-LINE APPLICATION

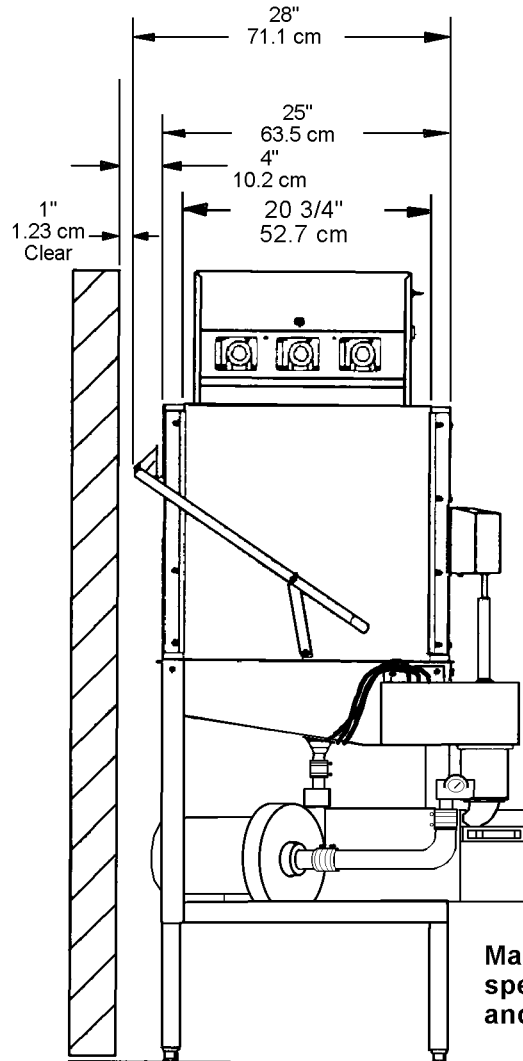


**TOP VIEW**  
TYPICAL TABLE DETAILS

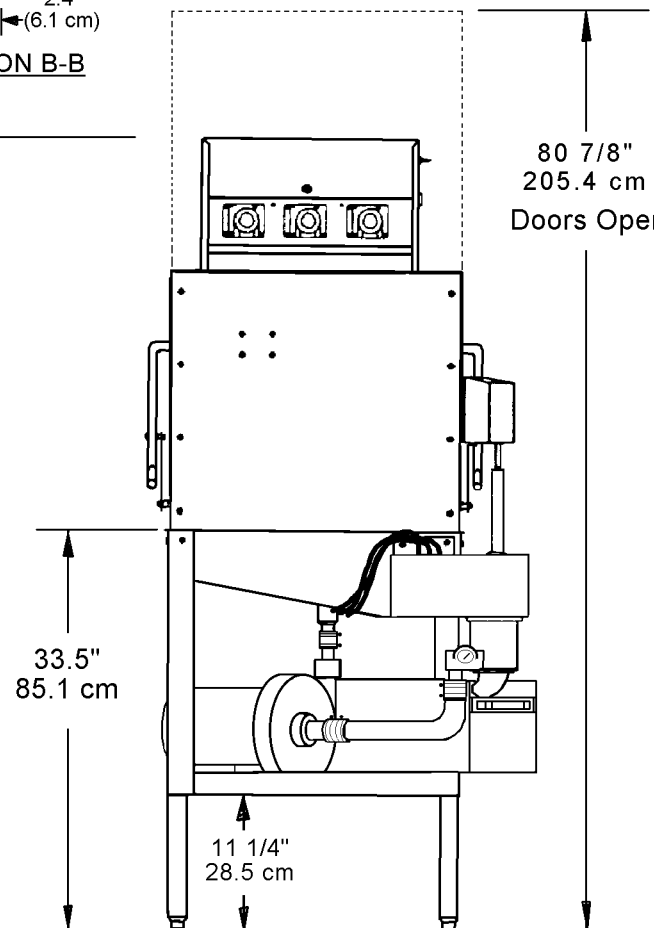
**NOTE:**  
All dimensions listed have a tolerance of + or - 1/8" unless otherwise noted.

**NOTE:**

Manufacturer reserves the right to modify these specifications in compliance with regulatory agencies and manufacturing expediency.



**SIDE VIEW**



**FRONT VIEW**