

TECHNICAL SUPPORT MATERIAL

PRODUCT INFORMATION

ADC-44 w/TOP MOUNTED BOOSTER



A 27 kW booster is attached to the top of conveyor on soil side of the machine. The booster is a 4 gallon tank and water line connects to the back of the booster, $\frac{3}{4}$ " pipe. It is rated for a 70-degree rise and must be supplied with its own power supply, which is separate from the dishmachine's power connection.

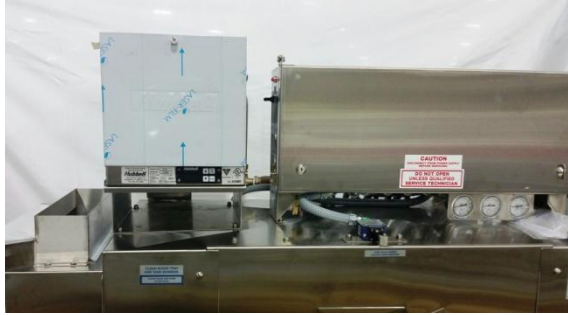
The 208v, 27 kw is rated 74.9amps and minimum breaker is 95amps and 3 gauge wire. The 240v, 27 kw is rated 65 amps and minimum breaker is 85 amps and 4 gauge wire.



Water inlet $\frac{3}{4}$ " at back of booster



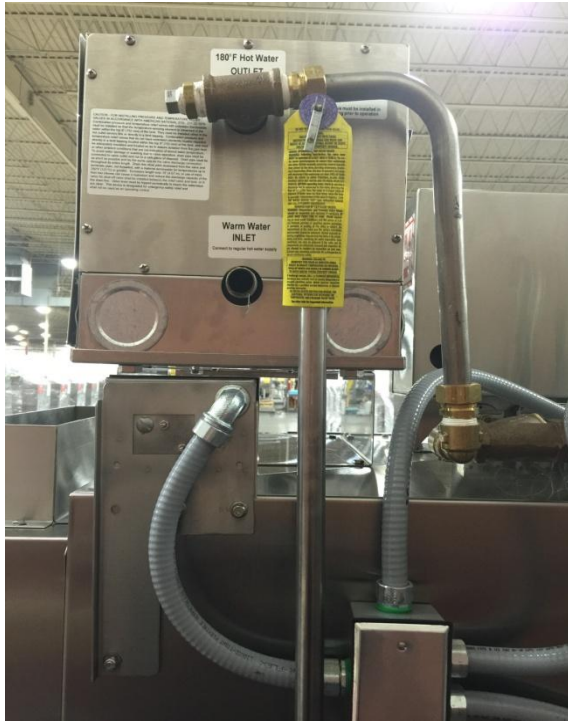
Individual power supply for booster, 95a, 208, 3-ph



The Control box is moved toward the clean side, booster on soil



If PRV is required (only if 50psi or above) install here, not supplied



Inlet of the booster is 62.5" AFF, top of booster is 71" AFF



Front view of Left to Right conveyor



Typical electrical connection for booster power circuit inside front cover