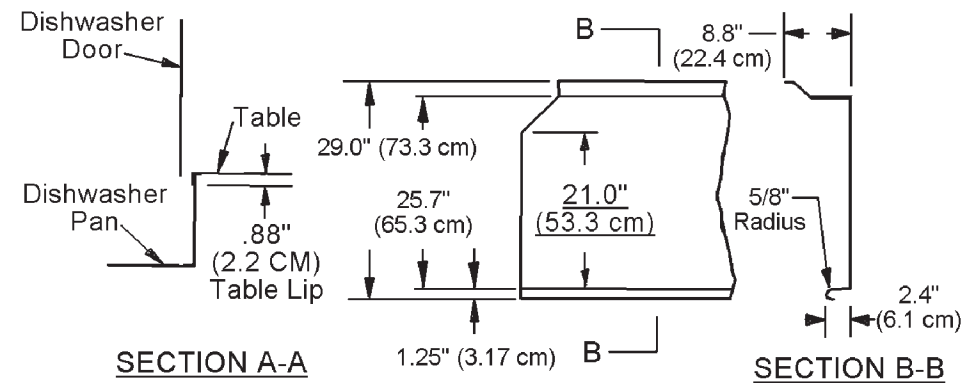


**CAUTION:**

Electrical and plumbing connections should be made by a qualified Service Person who will comply with all available federal, state, and local Health, Electrical, Plumbing, and Safety Codes. American Dish Service cannot be held liable for improper or faulty installation of this equipment.

\* American Dish Service reserves the right to modify these specifications in compliance with regulatory agencies and manufacturing expediency without prior notification.

**TYPICAL TABLE DETAILS**



**L-3DW-S**

L-90-3DW-S  
L-90-3DWC-S

<b>NSF RATED CAPACITY</b> (RACKS/HOUR)	<b>37</b>
<b>WASH TIME (IN SECONDS)</b>	<b>50</b>
<b>RINSE TIME (IN SECONDS)</b>	<b>30</b>
<b>DWELL (IN SECONDS)</b>	<b>10</b>
<b>GALLONS PER HOUR</b>	<b>44</b>
<b>TOTAL CYCLE TIME (IN SECONDS)</b>	<b>90</b>

**WATER TEMPERATURE OF SUPPLY WATER (NSF)** ..... **120° F. MINIMUM**  
or 49. Celsius

**WATER CONSUMPTION (NSF RATED)** ..... **1.2 GALS. PER CYCLE**  
or 4.5 liters/cycle

**MOTOR RATING** ..... **(1.125 KW) 1.5 HORSEPOWER**

**ELECTRICAL RATING (NEC)** ..... **115 Vac, 20amp breaker, 50/60Hz, 1 phase**

Connect to Supply Source using 10-12 AWG Copper wires using non-time delay fuse of 20 amp rating or 20 amp circuit breaker.

**RACK SIZE** ..... **STANDARD 19.75" X 19.75"**  
or 50.2 x 50.2 cm

**DOOR CLEARANCE** ..... **20.375" TALL x 20.5" WIDE**  
or 51.75 x 52.07 cm

**WATER INLET** ..... **(1/2") F.P.T.**

**DRAIN SIZE (Scrap Trap)** ..... **(2")**

**HEIGHT (ADJUSTER FEET WILL GIVE)** **MIN: 70.5", MAX: 71.48"**  
or 179.1 to 181.56 cm

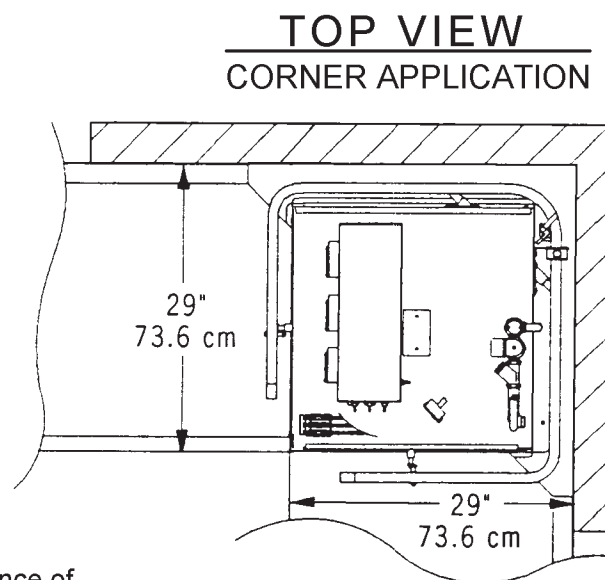
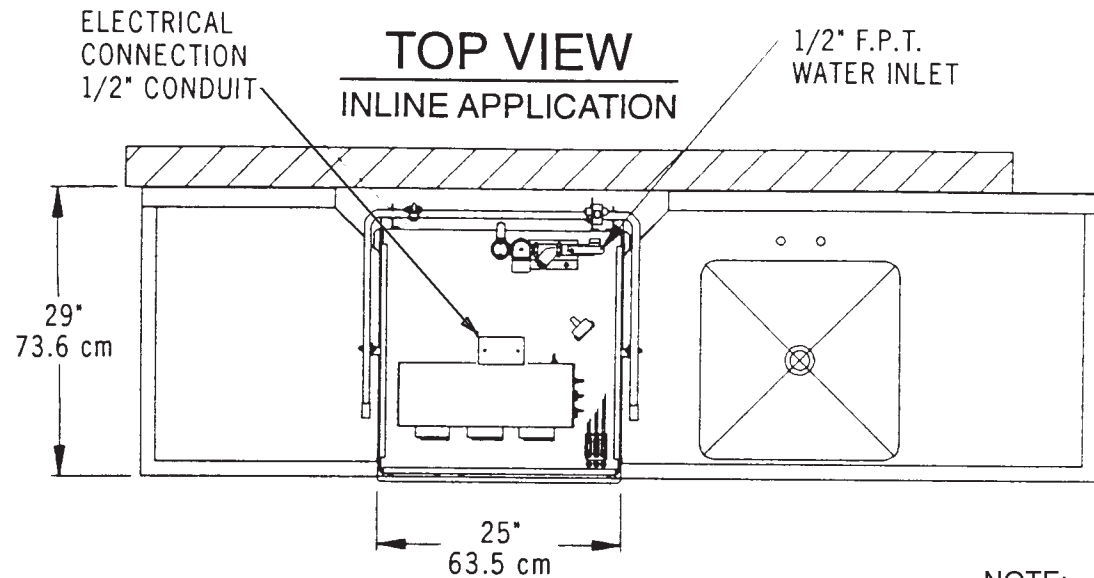
**WIDTH (OVERALL)** ..... **29"**  
or 73.6 cm

**WIDTH, TABLE TO TABLE (INLINE MODEL)** ..... **25"**  
or 63.5 cm

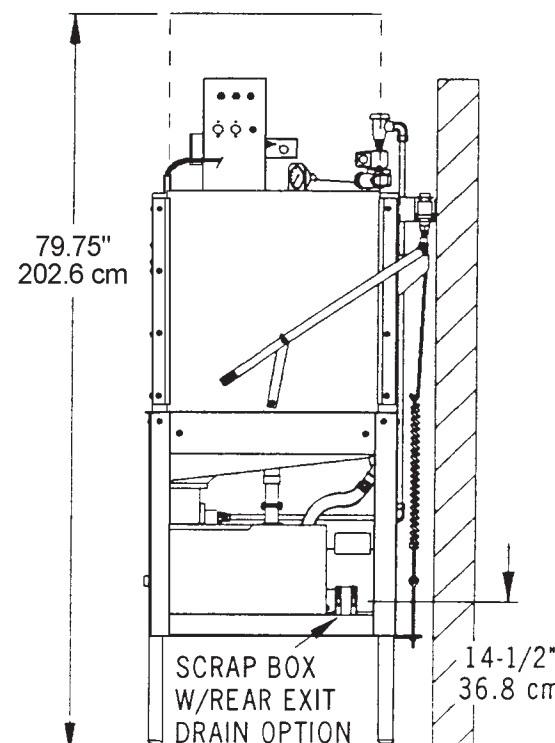
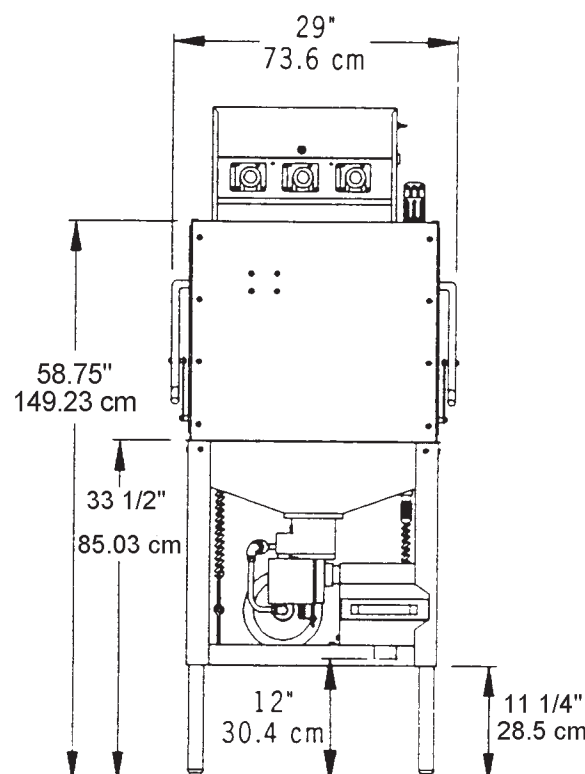
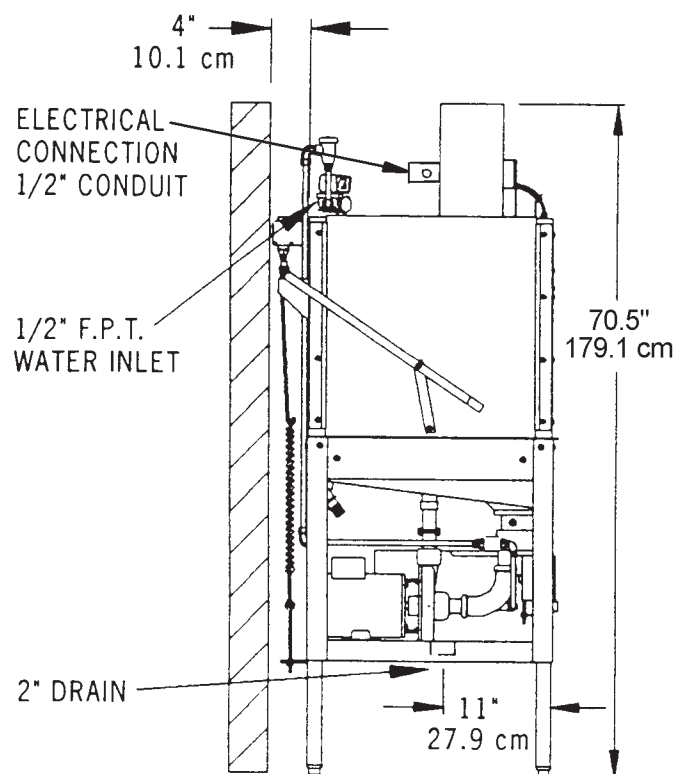
**DEPTH (OVERALL)** ..... **28"**  
or 71.1 cm

**SHIPPING WEIGHT** ..... **300 Lbs.**  
**136.1 kg**

**SHIPPING DIMENSIONS** ..... **36" L x 36" W x 78" H**  
**91.4 cm x 91.4 cm x 198.1 cm**



**NOTE:**  
All dimensions listed have a tolerance of + or - 1/8" unless otherwise noted.



**SIDE VIEW**

**FRONT VIEW**

**SIDE VIEW**