

# “L” Series

## The Smart Choice

Remarkable performance while only using 1.2 gallons of water per rack!

### STANDARD FEATURES

- A true LOW-ENERGY dump and fill dishmachine!
- Exterior mounted chemical pump heads
- Two-stage filter protects pump and spray jets
- Stainless steel sump and impeller
- 1.2 gallons of water per rack
- 90-second time cycle
- 37 racks per hour



#### **L-3DWC**

Corner inside sump  
with built-in scrap  
accumulator



#### **L-3DW**

Pass-thru inside sump with  
built-in scrap accumulator

### © American Dish Service

900 Blake Street | Edwardsville, Kansas, 66111  
Phone: 913.422.3700 | Toll-Free: 800.922.2178 | Fax: 913.422.6630  
orders@americandish.com | [americandish.com](http://americandish.com)

For detailed specifications, go to  
[www.americandish.com](http://www.americandish.com)

# "L" Series

The Smart Choice

## Standard Features

- Top mount controls
- True 3-door design, with only 2-doors opening in either configuration
  - Eliminates water on back wall
  - Doors stay in alignment
- Eye-level temperature gauge
- Built-in de-liming switch
- Large capacity internal scrapper
- No-adjustment solenoid replacement
- 1.5 HP wash pump
- Prime switches
- Automatic chemical feed
- Nylatron® strips to protect stainless doors



## "L" Series Specifications

U.S. REGISTERED PATENTS

	L-90-3DW-S	L-90-3DWC-S
NFS Rated Capacity (Racks/Hr.)	37	
Wash Time (Sec.)	50	
Rinse Time (Sec.)	30	
Dwell (Sec.)	10	
Total Cycle Time (Sec.)	90	
Water Temperature (Supply)	. . . . . 120° F Min. (49° C Min)	
Water Consumption (Per Cycle)	. . . . . 1.2 Gal. (4.5 Liter)	
Motor	. . . . . 1.5 HP (1.125 KW)	
Electrical Ratings (NEC)	. . . . . 115 Volts, 20 amp breaker, 50/60Hz (Single Phase)	

Connect to Supply Source using 10-12 AWG copper wires using non-time delay fuse of 20 amp circuit breaker.

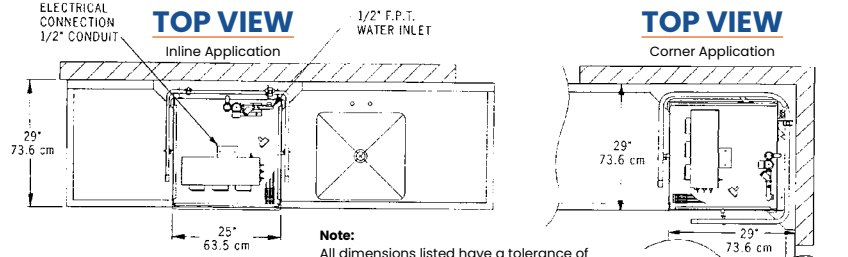
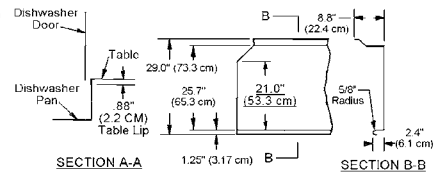
Rack Size	. . . . . 19.75" x 19.75" (50.2 cm x 50.2 cm)
Door Clearance	. . . . . 20.375" x 20.5" (51.75 cm x 52.1 cm)
Water Inlet	. . . . . 0.5" FPT
Drain (Scrap Trap)	. . . . . 2.0" Pipe
Height (Adjuster feet will give)	. . . . . Min: 70.5", Max: 71.48" (179.1 cm to 181.56 cm)
Width (Overall)	. . . . . 29" (73.6 cm)
Width, Table to Table (Inline Model)	. . . . . 25.0" (63.5 cm)
Depth (Overall)	. . . . . 28" (71.1 cm)
Shipping Weight	. . . . . 300 lb. (136.1 kg)
Shipping Dimensions	. . . . . 36" L x 36" W x 78" H (91.4 cm x 91.4 cm x 198.1 cm)

### CAUTION:

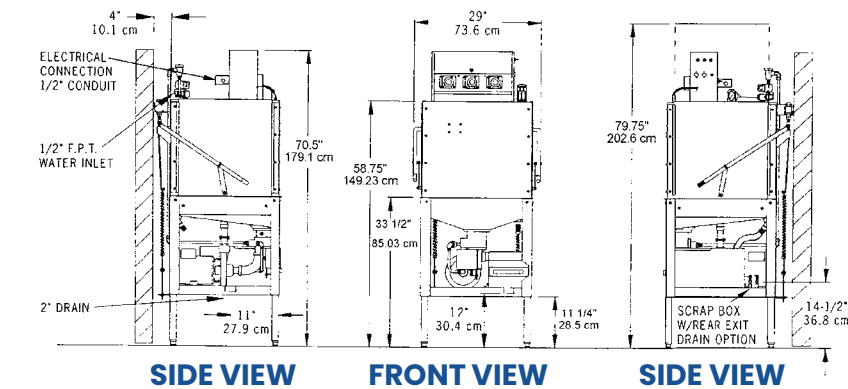
Electrical and Plumbing connections must be made by a qualified Service Person who will assure that the installation is in compliance with all applicable federal, state, and local Health, Electrical, Plumbing, and Safety Codes.

American Dish Service reserves the right to modify these specifications in compliance with regulatory agencies and manufacturing expediency without prior notification.

### TYPICAL TABLE DETAILS



Note: All dimensions listed have a tolerance of (+) or (-) 1/8" unless otherwise noted.



Effective 2/2023

**Warning:** Cancer and Reproductive Harm - [www.P65Warnings.ca.gov](http://www.P65Warnings.ca.gov)



© American Dish Service

900 Blake Street | Edwardsville, Kansas, 66111  
 913.422.3700 | Toll-Free: 800.922.2178 | Fax: 913.422.6630  
[orders@americandish.com](mailto:orders@americandish.com) | [americandish.com](http://americandish.com)